

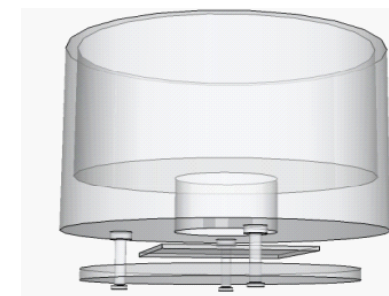
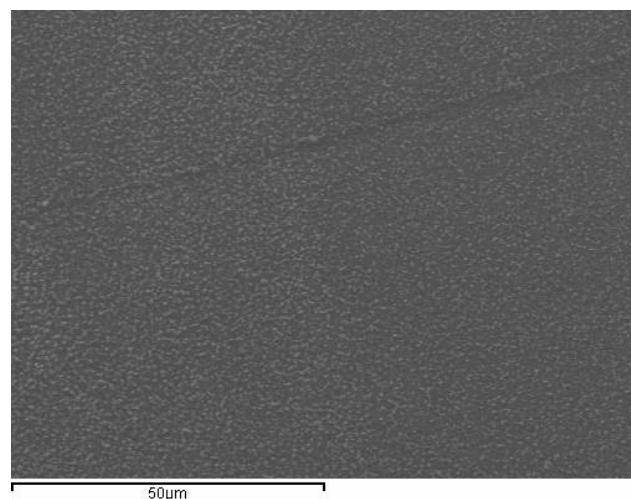
Electrophoretic Deposition (EPD) of Silver Nanoparticles on to Geometrically and Compositionally Modified Substrates

SIGNIFICANT FINDINGS:

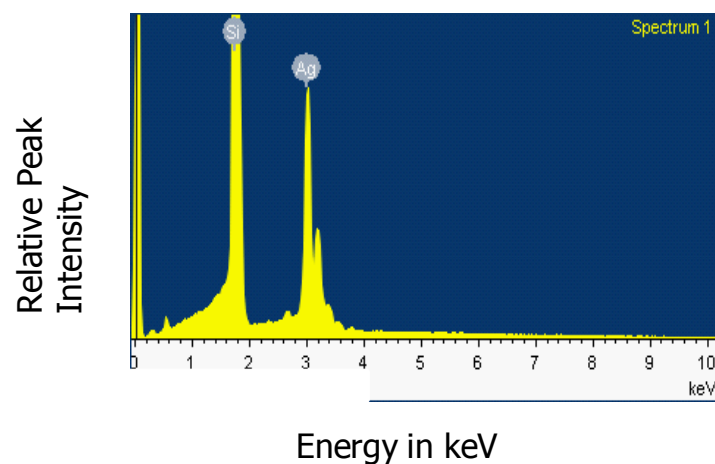
1. Design and built a suitable apparatus to optimize and control EPD of Ag nanoparticles various substrates
2. Simple and inexpensive technique
3. High degree of control of deposit thickness
4. Application of EPD grown films include
 - Fabrication of photovoltaic cells
 - Fabrication of specialized batteries
 - Construction of corrosion-resistance coatings
 - Nano-manufacturing (roll-to-roll)

AUTHOR(S):

Brandon Jenkins and James Mitchell



500 V FOR 10 MIN



FULL COUNT: 10000 CTS